

INTERIOR  
**Outdoor**

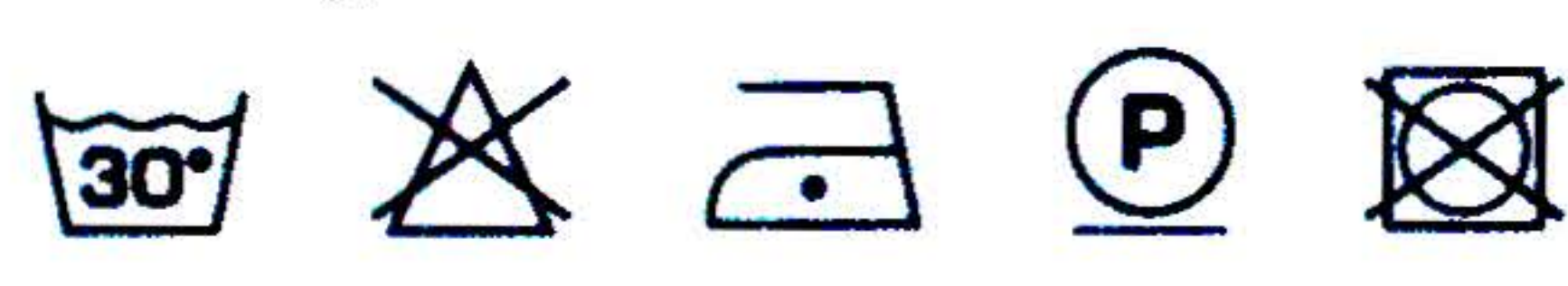
**ALCANTARA®**



# ALCANTARA® EXO

**Alcantara® EXO Cod. 5143**

**APPLICATION Upholstery Outdoor**

MAIN CHARACTERISTICS			
COMPOSITION	ALCANTARA®	Polyester	71 ± 3 %
		Polyurethane	29 ± 3 %
	Backing	Polyester	100%
THICKNESS			≤ 1.30 mm
UNIT WEIGHT		UNI EN 29073-1	≥ 310 g/m2
WIDTH			≥ 142 cm
DIMENSIONAL STABILITY	Water 40°C	UNI EN ISO 5077+ 6330	± 3 %
BREAKING LOAD	Lengthwise		≥ 600 N/5cm
	Crosswise	UNI EN 29073-3	≥ 400 N/5cm
ELONGATION AT 50 N	Lengthwise		≥ 2.5 %
	Crosswise	UNI EN ISO 13934-1	≥ 6 %
TEAR STRENGTH	Lengthwise		≥ 30 N
	Crosswise	UNI EN ISO 13937-3	≥ 30 N
MARTINDALE ABRASION 12kPa		EN ISO 12947-4	(*) ≥ 20000 cycles
	END POINT	EN ISO 12947-2	≥ 150000 cycles
SLIPPAGE RESISTANCE OF YARNS AT SEAM	Lengthwise		≤ 6 mm
	Crosswise	EN ISO 13936-2	≤ 6 mm
RESISTANCE TO PILLING	2000 cycles	EN ISO 12945-2	≥ 4/5
WATER IMPERMEABILITY		EN 20811	≥ 2 meters (water)
VAPOUR PERMEABILITY		UNI 4818-26	≥ 300 g/m2/day
<b>COLOR FASTNESS (**)</b>			
TO LIGHT	Xenotest Beta	UNI EN ISO 105 B02	≥ 7 blue scale (1-8)
	Q-Sun	ASTM G154-06 cycle 2	≥ 3 grey scale (1-5)
TO DOMESTIC WASHING	Tone change		≥ 4 grey scale (1-5)
	Staining	UNI EN ISO 105 C06	≥ 3 grey scale (1-5)
TO DRY CLEANING	Tone change		≥ 4 grey scale (1-5)
	Staining	AATCC 132	≥ 3 grey scale (1-5)
TO RUBBING	Dry		≥ 4 grey scale (1-5)
	Wet	UNI EN ISO 105 X12	≥ 3 grey scale (1-5)
TO WATER	Tone change		≥ 4 grey scale (1-5)
	Staining	EN ISO 105 E01	≥ 3.5 grey scale (1-5)
GENERAL WASHING			

(\*) Slight change in the appearance of product surface

(\*\*) Slight shade variations from one production batch to another one are possible on these products

## WATER-SOLUBLE STAINS

It is recommended that you use specific products for Alcantara® cleaning, (a list of which is available on [www.alcantara.com](http://www.alcantara.com) in the section maintenance); if they are not at your disposal, it is recommended, depending on the type of stain, that you should use water, lemon juice, or pure ethyl alcohol (from liquors) and follow the instructions below.

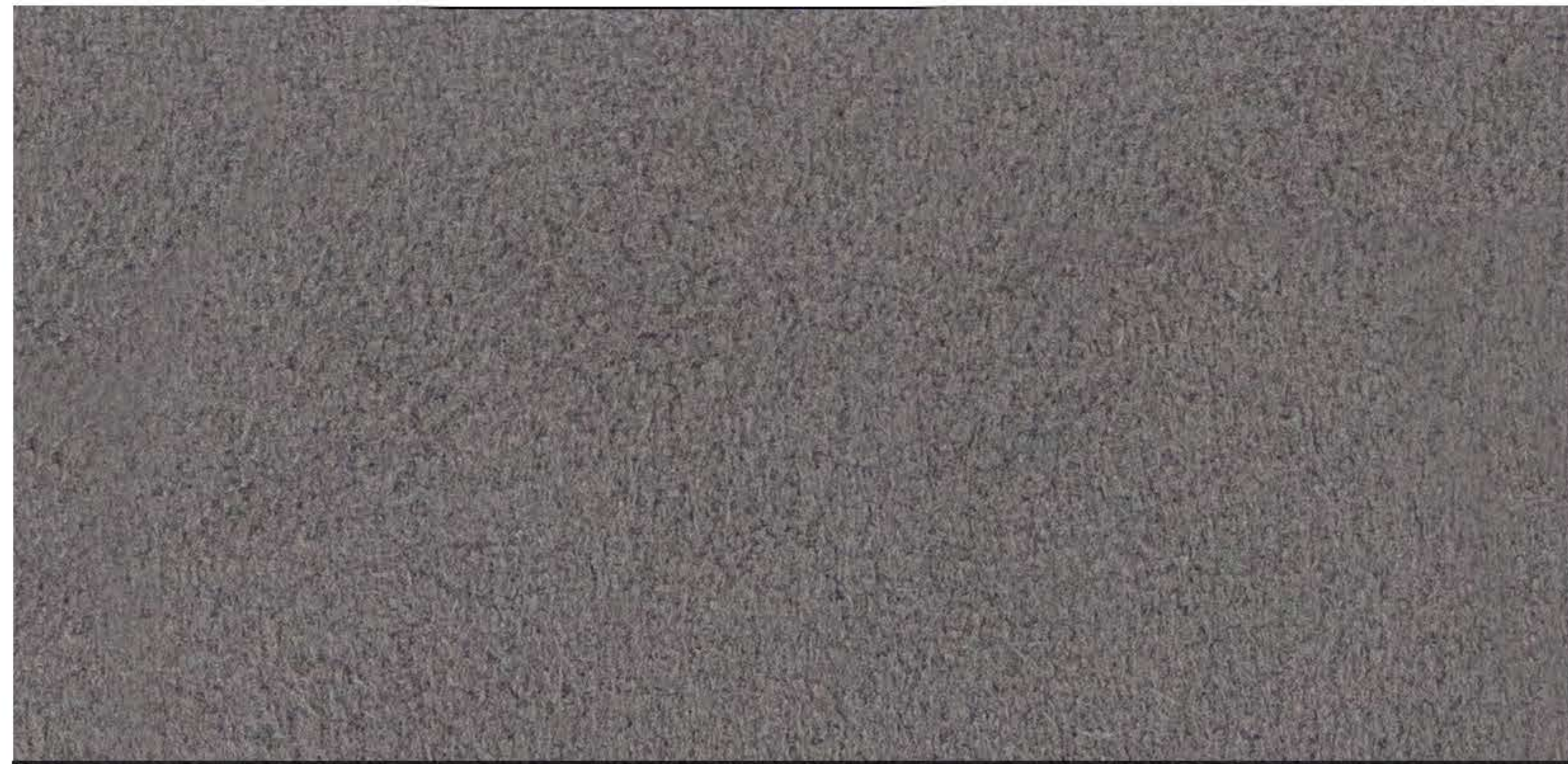
<i>Fruit juice, jam, jelly, syrup, ketchup.</i>	Use lukewarm water, rinse by dabbing with clean water.
<i>Blood, egg, excrement, urine.</i>	Use cold water; avoid warm water because it makes these substances coagulate, rinse by dabbing with clean water.
<i>Liquors, alcoholic beverages, wine, beer, coke, tea.</i>	Use lukewarm, if colour mark remains, treat it with lemon juice and then rinse it well.
<i>Copying pencil, cocoa, chocolate, pastry with cream or chocolate, ice cream, mustard.</i>	Use lukewarm water, rinse by dabbing with clean water.
<i>Vinegar, hair gel, tomato sauce, coffee with sugar.</i>	Use lemon juice and then wipe with lukewarm water rinse by dabbing with clean water.

Company with integrated certification systems





3883



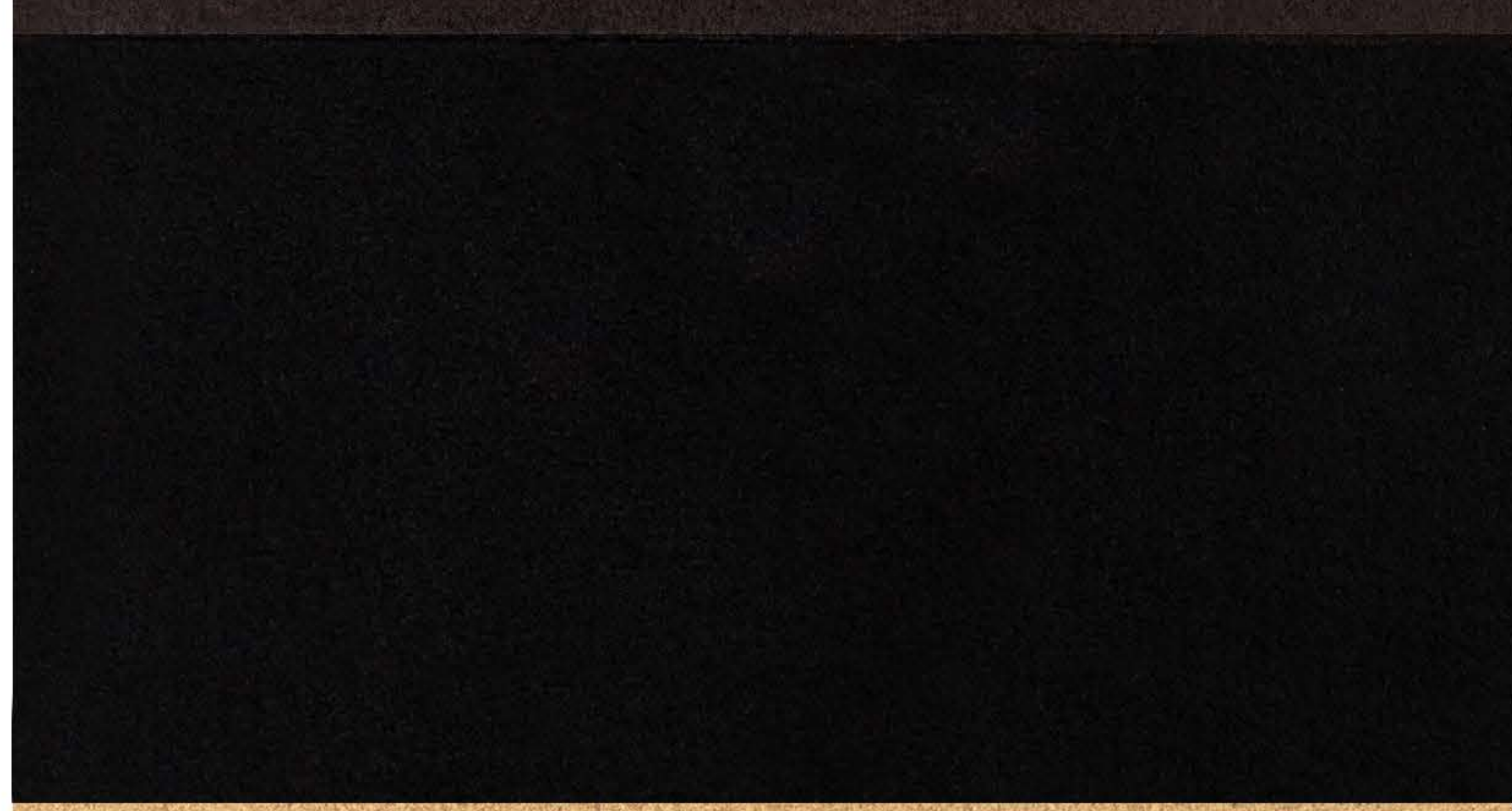
6225



9550



9604



1560



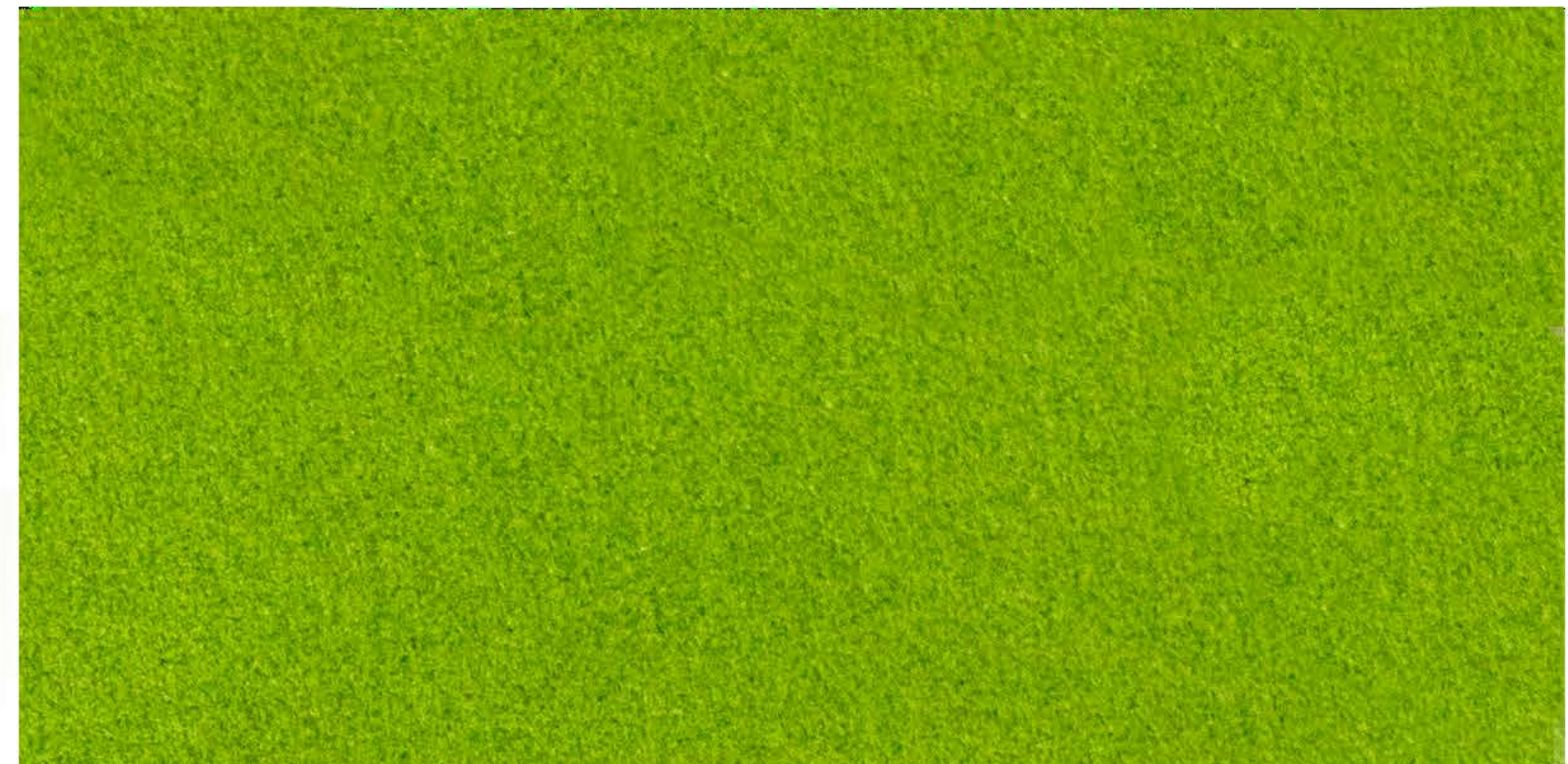
1165



P133



1145



1709



1553



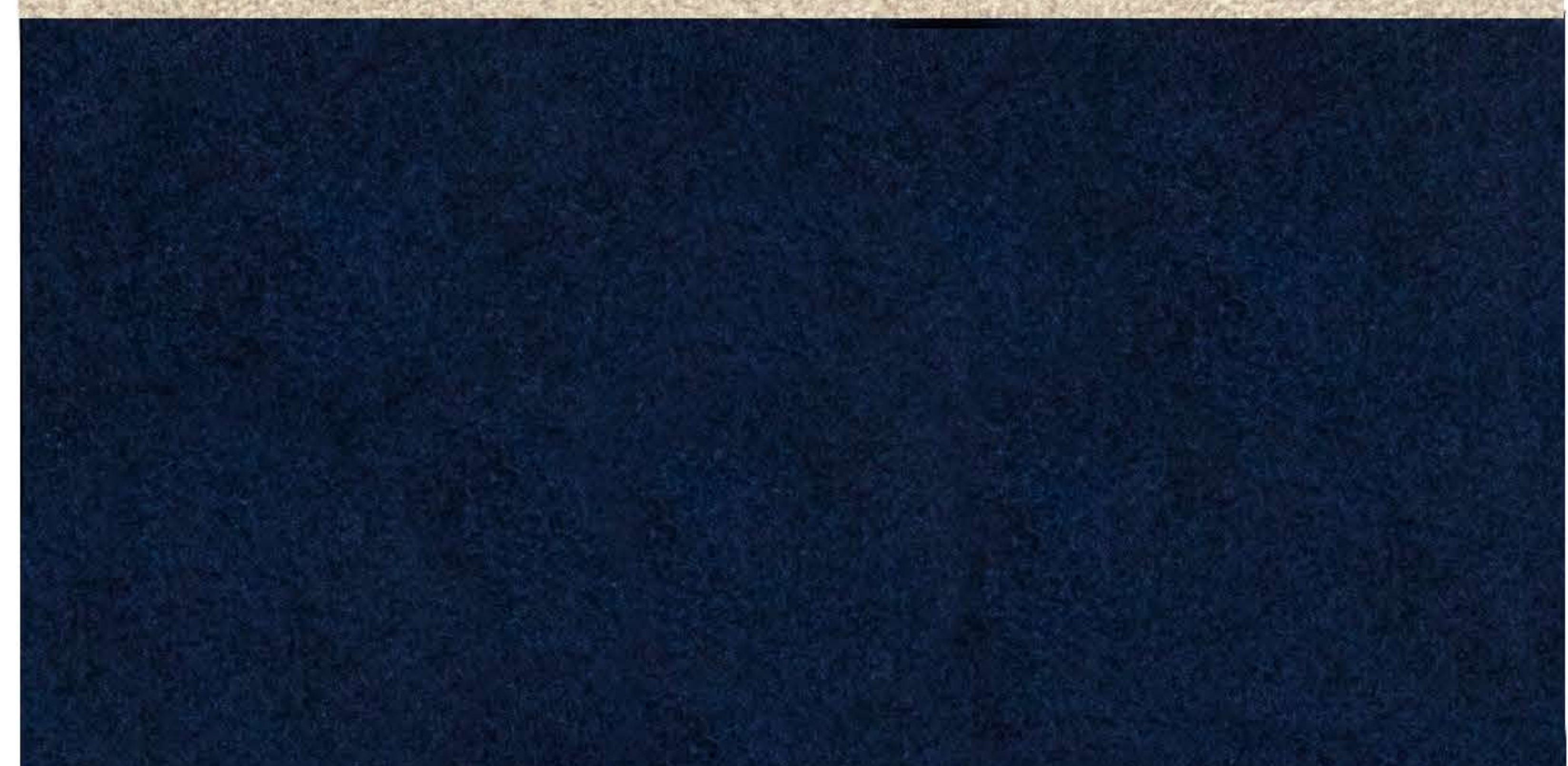
1313



1205



9401



P125





Alcantara S.p.a.  
Via Mecenate, 86 20138 Milano Italy  
Tel. +39 02 580301  
interior@alcantara.com  
alcantara.com



Cod. Y502YOUTD20  
Materiale pubblicitario non destinato alla vendita.  
Alcantara® is a registered trademark of Alcantara S.p.A.